

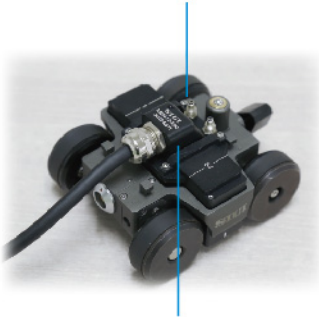
PA Crawler for Corrosion Mapping

MPS-01A



MPS-01A is suitable for PA immersion testing for corrosion on plate and pipe with OD $\geq 100\text{mm}$ (3.94 inch), recommend thickness $\geq 6\text{mm}$ (0.24 inch).

Water Irrigation



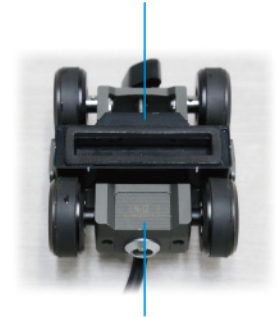
PA Immersion Probe with Elements Mark

Ergonomic Detachable Housing



Magnetic Wheels

Consumable Gasket



Integrated Encoder




New exhaust system ensures better coupling when circumference scanning at any angle.

Superior Features

- 108x 93x78 (mm), 1.8kg.
- 4mm near-surface resolution.
- Mouse shape design for easy control.
- Magnetic wheels for stable operation.
- Elastic gasket fits tightly to the surface of the workpiece.
- Mini water storage tank supports up to 15mm water layer.
- Wide coverage of sound beams to improve testing efficiency.
- Starting and ending elements marks are convenient to confirm PA probe scanning area.



Recommended Accessories

PA Immersion Probe	MPS-01A				
	Model	Frequency	Number of Elements	Pitch	Active Aperture
	7.5L64-1.0-7-IH2-P-110-05-T1	7.5MHz	64	1.0mm	64mm
Manual Irrigation Device IH-05	<ul style="list-style-type: none">● 1.5kg● Capacity: 5L● With Main pipe: 8×5.5mm (OD×ID), distributed pipe: 4×2.5mm (OD×ID) and strap● Manually pressurized, with adjustable flow valve				

Technical Specification

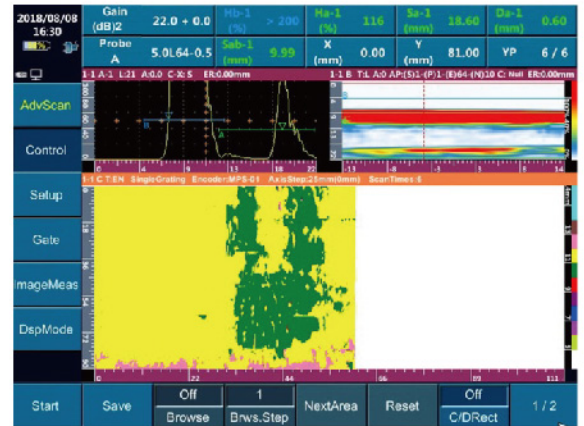
MPS-01A	
IP Code	IP68
Dimension	108x 93x78 (mm)
Weight	1.8kg
Scan Method	Manual, single axis scanning
Connecting Cable	With 4-core connector for crawler, 14-core connector for instrument
Suitable Tested Workpiece	Plate & pipe with OD $\geq 100\text{mm}$ (3.94 inch), recommend thickness $\geq 6\text{mm}$ (0.24 inch)
Operation Temperature	0°C ~ 40°C
Storage Temperature	-20°C ~ 60°C

- MPS-01A is compatible with instruments from Olympus/ Sonatest/ GE/ M2M/ TD/ Sonotron, etc.

PA Crawler for Corrosion Mapping

On-site Application

- Based on PA C-scan, the shape of the inner wall corrosion is simulated in the intuitive scan result with scattered spot corrosion being captured.



- PA inspection for pipe corrosion



SIUI

Shantou Institute of Ultrasonic Instruments Co., Ltd.

Add: #77, Jinsha Road, Shantou 515041, Guangdong, China

Tel: +86-754-88250150 Fax: +86-754-88603664

E-mail: siui@siui.com Website: <http://www.siui.com>



Specifications and appearance are subject to change without prior notice.
DCY2.781.EN.MPS-01A.CY/220817